

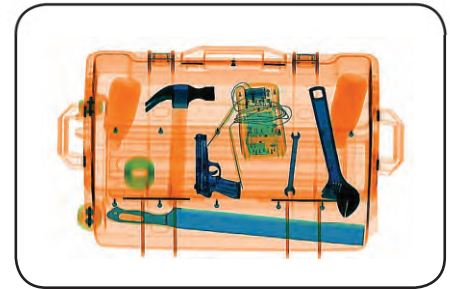
# EBZX02

## Dual Energy X-Ray Machine

Utilising a dual energy generator, the EBZX02 x-ray machine offers clear scanning, allowing operators to identify suspicious items quickly and accurately.

### FEATURES

- Energy-saving mode
- Bi-direction scanning (optional)
- Electrical weighing system (optional)
- Fingerprint console board (optional)
- Console desk (optional)
- Alarm
- 64 x Zoom function



### SPECIFICATIONS

Tunnel Size	W 507mm × H 305mm
Speed	0.20 m/s
Height of Transmission Belt	1000 mm
Maximum Load	≤120 Kg (Adequate distribution)
Penetration	32mm Steel board
Monitor	17 inch LED
System Function	High density alarm, Explosive/Drug auxiliary detect, TIP, Luggage counter, System running timer, X-ray emitting timer, System maintenance, Training, 64 x continuous zoom
Film Safety	ASA/ISO1600 standard of film safety
Package Dimensions	1990 x 990 x 1320 mm (LxWxH)
Overall Weight	450 kg
Power Consumption	1 kVA
Noise	53.8 dB(A)
<b>X-Ray System</b>	
Tube Voltage	140 Kv
Cooling	Seal oil cooling / 100%
Single Inspection Dosage Rate	≤1.0 μ Gy
Radiation Leak Dosage	0.1 μ Gy/h (5cm from the shell)

