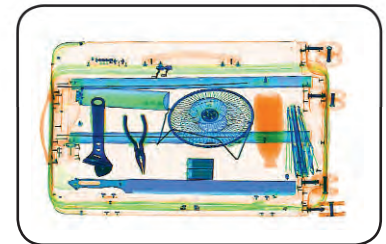


# EBZX05

## Dual Energy X-Ray Machine



Utilising a dual energy x-ray generator, the EBZX05 x-ray machine offers clear scanning, allowing operators to identify suspicious items quickly and accurately.



### FEATURES

- Adjustable belt speed
- Large baggage and parcel screening
- Fingerprint console board
- Dual monitor operation desk
- Bi-directional scanning

### SPECIFICATIONS

Tunnel Size	1008mm × 1009mm (WxH)
Speed	0.20 m/s
Height of Transmission Belt	387 mm
Maximum Load	200 Kg (Adequate distribution)
Wire Resolution	38 AWG
Space Definition	Horizontal Ø1.0mm / Vertical Ø2.0mm
Penetrate Definition	32 AWG
Penetration	30mm Steel board
Monitor	21.5 inch LED X 2
System Function	High density alarm, TIP, Luggage counter, Date/time display, User management, Training, Explosive/Drug auxiliary detect
Film Safety	ASA/ISO1600 standard of film safety
Dimensions	2600 x 1520 x 1920 mm (LxWxH)
Console Desk Dimensions	1320 x 850 x 1320 mm (LxWxH)
Overall Weight	1250 kg + 135 kg (console desk)
Power Consumption	1 kVA
Noise	55.8 dB(A)
<b>X-Ray System</b>	
Tube Voltage	160 Kv
Cooling	Seal oil cooling / 100%
Radiation Leak Dosage	0.2 μ Gy/h (5cm from the shell)

