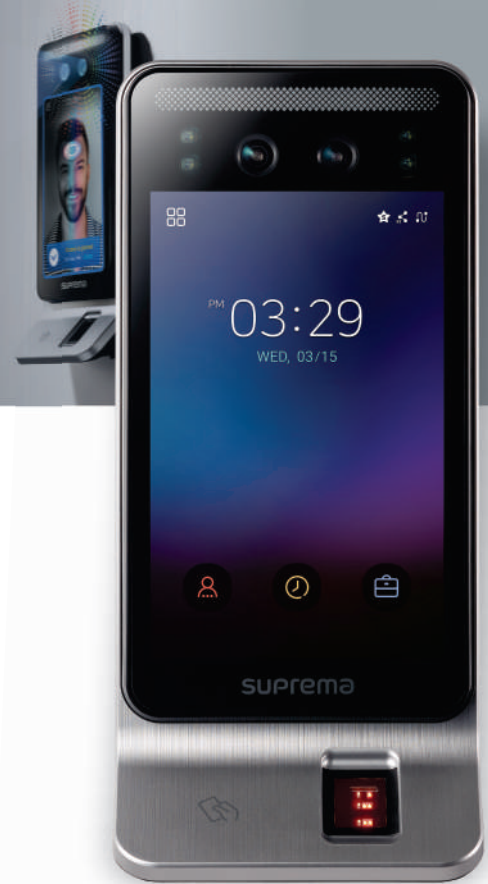


EBSFF850

Fingerprint & Facial Recognition Device

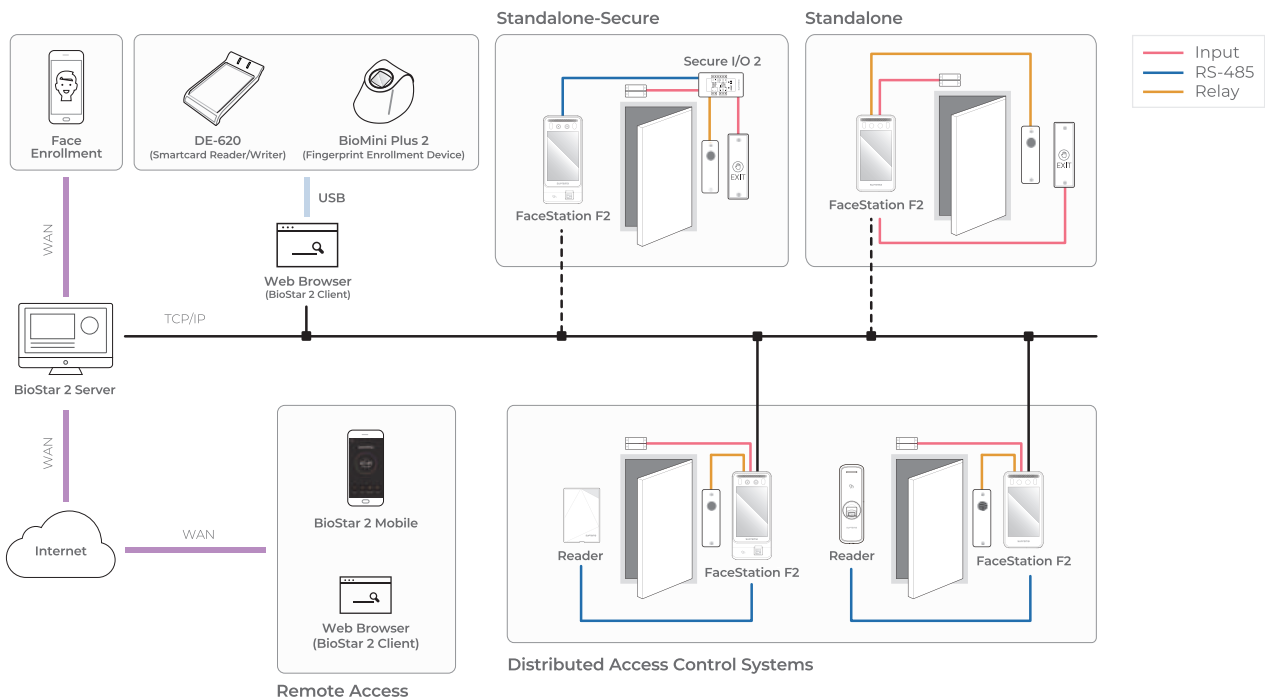


The EBSFF850 boasts exceptional authentication accuracy achieved by the fusion matching of visual and infrared (IR) face recognition.

FEATURES

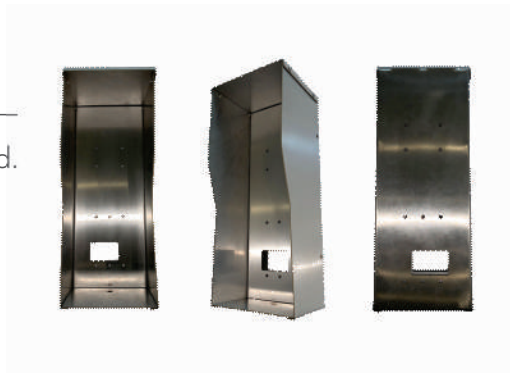
- Anti-spoofing via IR-Based Live Face Detection
- Encrypts all biometric credentials and personal information

SYSTEM CONFIGURATIONS



OPTIONAL ADD-ON

The EBSFF850 rain shield.



Category	Feature		
Credential	Biometric	Face, Fingerprint	
	RF Option	125kHz EM & 13.56MHz MIFARE, MIFARE Plus, DESFire EV1/EV2 ⁽¹⁾ , FeliCa	
	RF Read Range ⁽²⁾	EM/MIFARE/DESFire : 50 mm (2"), FeliCa: 30 mm (1.2")	
	Mobile	NFC, BLE	
General	CPU	1.8 GHz Dual Core + 1.4 GHz Quad Core	
	Memory	16GB Flash + 2GB RAM	
	LCD Type	7" IPS color LCD	
	LCD Resolution	800 x 1280 pixels	
	Sound	16bit	
	Operating Temperature	-20°C ~ 50°C (-68°F ~ 122°F)	
	Operating Humidity	0% ~ 80%, non-condensing	
	Dimension (W x H x D)	119.8mm x 268.4mm x 49.7mm (4.7" x 10.6" x 1.9")	
	Weight	Device	670g
		Bracket (Including washer and bolt)	205g
	IP Rating	IP65	
Certificates	CE, FCC, KC, RoHS, REACH, WEEE		
Face	Recognition Distance	0.5m ~ 1.3m (19.7" ~ 51.2")	
	Recognition Height	140cm ~ 190cm (55.1" ~ 74.8")	
	Matching Speed	Less than 0.5 sec	
	Live Face Detection (Anti-Spoofing)	Supported	
Fingerprint	Image Dimension	300 x 400 pixels	
	Resolution	500 dpi	
	Template	SUPREMA / ISO19794-2, ANSI-378	
	Extractor / Matcher	MINEX certified and compliant	
	Sensor Certificates	FBI PIV and FBI Mobile ID FAP20	
	Live Fingerprint Detection	Supported (Deep learning-based)	
Capacity	Max. User (1:1) *Based on one face/fingerprint enrollment per user	100,000	
	Max. User (1:N) *Based on one face/fingerprint enrollment per user	Face: 50,000 Fingerprint: 100,000	
	Max. Text Log	5,000,000	
	Max. Image Log	50,000	
Interface	Ethernet	10/100 Mbps, auto MDI/MDIX	
	RS-485	1ch Host or Slave (Selectable)	
	Wiegand	1ch Input or Output (Selectable)	
	TTL Input	2ch Inputs	
	Relay	1 Relay	
	USB	USB 2.0 (Host)	
	Tamper	Supported	
Power		Voltage: DC 12V ~ DC 24V Current: Max. 2.5 A * Use a 24V/2.5A adapter. Must follow the product manual when using a 12V adapter.	

⁽¹⁾ DESFire EV2 cards are supported by having backward compatibility of DESFire EV1 cards. CSN and smart card functions are compatible with FaceStation F2.

⁽²⁾ RF read range will vary depending on the installation environment.

